

# Romidepsin Injection

Amneal

No  
reconstitution  
required



HCPCS code:  
J9318

Pack NDC	Dosage Strength	Pack Size
70121-2250-01	27.5 mg/5.5 mL (5 mg/mL)	1 x 5.5 mL Single-Dose Vial

## Reduce time, space, and waste

Amneal Romidepsin **comes in a ready-to-dilute solution**, saving time and streamlining preparation. Simply withdraw the required dosing amount from the vial and dilute before administration.

A **single vial supports all dosing needs**, minimizing waste and storage space requirements.

And, with **room temperature storage**, there's no need for refrigeration, adding further convenience.

Minimize complexity with Amneal Romidepsin, now available direct from Amneal Pharmaceuticals through **AmnealDirect.com**.

See accompanying full Prescribing Information

**AP-rated equivalent to Romidepsin Injection from Teva\***

\*Product is no longer sold. Federal Register determined that the product is not discontinued or withdrawn for safety or efficacy reasons. All trademarks are property of their respective owners. Images are for reference only; actual product may vary. © 2026 Amneal Pharmaceuticals LLC. All rights reserved. ROMPS-01 06.26

## NDC CODE ANNOUNCEMENT

# Romidepsin, non-lyophilized, J9318: New NDC Code

Amneal Pharmaceuticals has launched a new National Drug Code (NDC), 70121-2250-01, for its romidepsin solution, approved under an Abbreviated New Drug Application (ANDA). Because the Amneal product is in solution form and does not require reconstitution, it uses a different code than lyophilized formulations (powder).

70121-2250-01 → J9318

Payers and providers should update their systems and records accordingly to ensure accurate billing and reimbursement. Full pricing detail is below.

## HCPCS &amp; NDC INFORMATION

HCPCS	J9318
HCPCS Code Descriptor	Injection, romidepsin, non-lyophilized, 0.1 mg
Manufacturer	Amneal Pharmaceuticals LLC
11-Digit NDC*	70121-2250-01
Product Name	Romidepsin (non-lyophilized)
Package Description	27.5 mg/5.5 mL (5 mg/mL) – 1 Single-Dose Vial in 1 Carton
WAC	\$8,700.00 / package • \$31.636 / HCPCS unit (275 HCPCS units)

\*The above 11-digit NDC code is used for claims processing and reimbursement.

## IMPORTANT SAFETY INFORMATION &amp; INDICATION

Romidepsin injection solution is a histone deacetylase inhibitor indicated for the treatment of cutaneous T-cell lymphoma in adult patients who have received at least one prior systemic therapy.

The most common adverse reactions associated with romidepsin injection solution include nausea, fatigue, infections, vomiting, anorexia, electrocardiogram ST-T wave changes, dysgeusia, constipation and pruritus. Grade 3-4 laboratory abnormalities ( $\geq 10\%$ ) include lymphopenia, neutropenia, anemia and thrombocytopenia.

Please see full Prescribing Information below.

## HIGHLIGHTS OF PRESCRIBING INFORMATION

These highlights do not include all the information needed to use ROMIDEPSIN INJECTION safely and effectively. See full prescribing information for ROMIDEPSIN INJECTION.

### ROMIDEPSIN injection, for intravenous use

Initial U.S. Approval: 2009

#### INDICATIONS AND USAGE

Romidepsin injection is a histone deacetylase (HDAC) inhibitor indicated for the treatment of cutaneous T-cell lymphoma (CTCL) in adult patients who have received at least one prior systemic therapy. (1)

#### DOSAGE AND ADMINISTRATION

- 14 mg/m<sup>2</sup> administered intravenously over a 4-hour period on days 1, 8, and 15 of a 28-day cycle. Repeat cycles every 28 days provided that the patient continues to benefit from and tolerates the drug. (2.1)
- Discontinue or interrupt treatment (with or without dose reduction to 10 mg/m<sup>2</sup>) to manage drug toxicity. (2.2)
- Reduce starting dose in patients with moderate and severe hepatic impairment. (2.3)

#### DOSAGE FORMS AND STRENGTHS

Injection: 27.5 mg/5.5 mL (5 mg/mL) in single-dose vial. (3)

#### CONTRAINDICATIONS

None. (4)

#### WARNINGS AND PRECAUTIONS

- **Myelosuppression:** Romidepsin can cause thrombocytopenia, leukopenia (neutropenia and lymphopenia), and anemia; monitor blood counts during treatment with romidepsin injection; interrupt and/or modify the dose as necessary. (5.1)
- **Infections:** Fatal and serious infections. Reactivation of DNA viruses (Epstein Barr and hepatitis B). Consider monitoring and prophylaxis in patients with evidence of prior hepatitis B. (5.2)
- **Electrocardiographic (ECG) changes:** Consider cardiovascular monitoring in patients with congenital long QT syndrome, a history of significant cardiovascular disease, and patients taking medicinal products

that lead to significant QT prolongation. Ensure that potassium and magnesium are within the normal range before administration of romidepsin injection. (5.3)

- **Tumor lysis syndrome:** Patients with advanced stage disease and/or high tumor burden are at greater risk and should be closely monitored and appropriate precautions taken. (5.4)
- **Embryo-fetal toxicity:** Can cause fetal harm. Advise females of reproductive potential and males with female partners of reproductive potential of potential risk to a fetus and to use effective contraception. (5.5, 8.1, 8.3)

#### ADVERSE REACTIONS

The most common adverse reactions (≥ 30%), excluding laboratory abnormalities, are nausea, fatigue, infections, vomiting, anorexia, electrocardiogram ST-T wave changes, dysgeusia, constipation and pruritus. Grade 3 to 4 laboratory abnormalities (≥ 10%) include lymphopenia, neutropenia, anemia and thrombocytopenia. (6)

To report SUSPECTED ADVERSE REACTIONS, contact Amneal Pharmaceuticals LLC at 1-877-835-5472 or FDA at 1-800-FDA-1088 or [www.fda.gov/medwatch](http://www.fda.gov/medwatch).

#### DRUG INTERACTIONS

- **Warfarin:** Carefully monitor prothrombin time (PT) and International Normalized Ratio (INR) in patients receiving concurrent warfarin or coumarin derivatives. (7.1)
- **CYP3A4 inhibitors:** Monitor for toxicities related to increased romidepsin exposure when co-administering romidepsin with strong CYP3A4 inhibitors. (7.2)
- **CYP3A4 inducers:** Avoid use with rifampin and strong CYP3A4 inducers. (7.3)

See 17 for PATIENT COUNSELING INFORMATION and FDA-approved patient labeling.

Revised: 09/2025

## FULL PRESCRIBING INFORMATION: CONTENTS

### 1 INDICATIONS AND USAGE

### 2 DOSAGE AND ADMINISTRATION

- 2.1 Dosage Information
- 2.2 Dosage Modification
- 2.3 Dosage in Patients with Hepatic Impairment
- 2.4 Instructions for Preparation and Intravenous Administration

### 3 DOSAGE FORMS AND STRENGTHS

### 4 CONTRAINDICATIONS

### 5 WARNINGS AND PRECAUTIONS

- 5.1 Myelosuppression
- 5.2 Infections
- 5.3 Electrocardiographic Changes
- 5.4 Tumor Lysis Syndrome
- 5.5 Embryo-Fetal Toxicity

### 6 ADVERSE REACTIONS

- 6.1 Clinical Trials Experience

### 7 DRUG INTERACTIONS

- 7.1 Warfarin or Coumarin Derivatives
- 7.2 Drugs That Inhibit CYP3A4 Enzymes
- 7.3 Drugs That Induce CYP3A4 Enzymes

### 8 USE IN SPECIFIC POPULATIONS

- 8.1 Pregnancy
- 8.2 Lactation
- 8.3 Females and Males of Reproductive Potential
- 8.4 Pediatric Use
- 8.5 Geriatric Use
- 8.6 Hepatic Impairment

### 10 OVERDOSAGE

### 11 DESCRIPTION

### 12 CLINICAL PHARMACOLOGY

- 12.1 Mechanism of Action
- 12.2 Pharmacodynamics
- 12.3 Pharmacokinetics

### 13 NONCLINICAL TOXICOLOGY

- 13.1 Carcinogenesis, Mutagenesis, Impairment of Fertility

### 14 CLINICAL STUDIES

### 15 REFERENCES

### 16 HOW SUPPLIED/STORAGE AND HANDLING

### 17 PATIENT COUNSELING INFORMATION

\*Sections or subsections omitted from the full prescribing information are not listed.

## FULL PRESCRIBING INFORMATION

### 1 INDICATIONS AND USAGE

Romidepsin injection is indicated for the treatment of cutaneous T-cell lymphoma (CTCL) in adult patients who have received at least one prior systemic therapy.

### 2 DOSAGE AND ADMINISTRATION

#### 2.1 Dosage Information

The recommended dosage of romidepsin injection is 14 mg/m<sup>2</sup> administered intravenously over a 4-hour period on days 1, 8, and 15 of a 28-day cycle. Cycles should be repeated every 28 days provided that the patient continues to benefit from and tolerates the drug.

#### 2.2 Dosage Modification

##### Nonhematologic toxicities except alopecia

- Grade 2 or 3 toxicity: Treatment with romidepsin injection should be delayed until toxicity returns to Grade 0 to 1 or baseline, then therapy may be restarted at 14 mg/m<sup>2</sup>. If Grade 3 toxicity recurs, treatment with romidepsin injection should be delayed until toxicity returns to Grade 0 to 1 or baseline and the dose should be permanently reduced to 10 mg/m<sup>2</sup>.
- Grade 4 toxicity: Treatment with romidepsin injection should be delayed until toxicity returns to Grade 0 to 1 or baseline, then the dose should be permanently reduced to 10 mg/m<sup>2</sup>.
- Romidepsin injection should be discontinued if Grade 3 or 4 toxicities recur after dose reduction.

##### Hematologic toxicities

- Grade 3 or 4 neutropenia or thrombocytopenia: Treatment with romidepsin injection should be delayed until the specific cytopenia returns to ANC greater than or equal to  $1.5 \times 10^9/L$  and platelet count greater than or equal to  $75 \times 10^9/L$  or baseline, then therapy may be restarted at 14 mg/m<sup>2</sup>.
- Grade 4 febrile (greater than or equal to 38.5°C) neutropenia or thrombocytopenia that requires platelet transfusion: Treatment with romidepsin injection should be delayed until the specific cytopenia returns to less than or equal to Grade 1 or baseline, and then the dose should be permanently reduced to 10 mg/m<sup>2</sup>.

#### 2.3 Dosage in Patients with Hepatic Impairment

For patients with moderate or severe hepatic impairment, reduce the starting dose of romidepsin injection as shown in Table 1 and monitor for toxicities more frequently. Dosage adjustment is not required for patients with mild hepatic impairment.

**Table 1: Recommendations for Starting Dose in Patients with Moderate and Severe Hepatic Impairment**

Hepatic Impairment	Bilirubin Levels	Romidepsin Injection Dose
Moderate	greater than $1.5 \times$ ULN to less than or equal to $3 \times$ ULN	7 mg/m <sup>2</sup>
Severe	greater than $3 \times$ ULN	5 mg/m <sup>2</sup>

ULN = Upper limit of normal.

#### 2.4 Instructions for Preparation and Intravenous Administration

Romidepsin injection is a hazardous drug. Follow applicable special handling and disposal procedures.<sup>1</sup>

Romidepsin injection must be diluted with 0.9% Sodium Chloride Injection, USP before intravenous infusion.

- Extract the appropriate amount of romidepsin injection from the vial to deliver the desired dose, using proper aseptic technique. Before intravenous infusion, dilute romidepsin injection in 500 mL 0.9% Sodium Chloride Injection, USP.
- Infuse over 4 hours.
- Discard unused portion.

The diluted solution is compatible with polyvinyl chloride (PVC), ethylene vinyl acetate (EVA), polyethylene (PE) infusion bags as well as glass bottles, and is chemically stable for up to 24 hours when stored at room temperature. However, it should be administered as soon after dilution as possible.

Parenteral drug products should be inspected visually for particulate matter and discoloration before administration, whenever solution and container permit.

### 3 DOSAGE FORMS AND STRENGTHS

Injection: 27.5 mg/5.5 mL (5 mg/mL) in single-dose vial.

### 4 CONTRAINDICATIONS

None.

### 5 WARNINGS AND PRECAUTIONS

#### 5.1 Myelosuppression

Treatment with romidepsin can cause thrombocytopenia, leukopenia (neutropenia and lymphopenia), and anemia. Monitor blood counts regularly during treatment with romidepsin injection and modify the dose as necessary [see *Dosage and Administration (2.2)* and *Adverse Reactions (6.1)*].

#### 5.2 Infections

Fatal and serious infections have been reported in clinical trials of romidepsin, including pneumonia, sepsis, and viral reactivation, including reactivation of Epstein Barr and hepatitis B viruses. These infections can occur during and following treatment. The risk of life-threatening infections may be greater in patients with a history of prior treatment with monoclonal antibodies directed against lymphocyte antigens and in patients with disease involvement of the bone marrow [see *Adverse Reactions (6.1)*].

Reactivation of hepatitis B virus infection was reported in 1% of patients in clinical trials. In patients with evidence of prior hepatitis B infection, consider monitoring for reactivation, and consider antiviral prophylaxis.

Reactivation of Epstein Barr viral infection leading to liver failure has occurred in recipients of romidepsin including after ganciclovir prophylaxis.

#### 5.3 Electrocardiographic Changes

Several treatment-emergent morphological changes in ECGs (including T-wave and ST-segment changes) have been reported in clinical studies. The clinical significance of these changes is unknown [see *Adverse Reactions (6.1)*].

In patients with congenital long QT syndrome, patients with a history of significant cardiovascular disease, and patients taking anti-arrhythmic medicines or medicinal products that lead to significant QT prolongation, consider cardiovascular monitoring of ECGs at baseline and periodically during treatment.

Confirm that potassium and magnesium levels are within normal range before administration of romidepsin injection [see *Adverse Reactions (6.1)*].

#### 5.4 Tumor Lysis Syndrome

Tumor lysis syndrome (TLS) has been reported to occur in recipients of romidepsin, including in 1% of patients with tumor stage CTCL. Patients with advanced stage disease and/or high tumor burden are at greater risk, should be closely monitored, and managed as appropriate.

#### 5.5 Embryo-Fetal Toxicity

Based on its mechanism of action and findings from animal studies, romidepsin injection can cause fetal harm when administered to a pregnant woman. In an animal reproductive study, romidepsin was embryocidal and caused adverse developmental outcomes at exposures below those in patients at the recommended dose of 14 mg/m<sup>2</sup>. Advise females of reproductive potential to use effective contraception during treatment and for 1 month after the last dose. Advise males with female partners of reproductive potential to use effective contraception during treatment and for 1 month after the last dose [see *Use in Specific Populations (8.1, 8.3)* and *Clinical Pharmacology (12.1)*].

### 6 ADVERSE REACTIONS

The following clinically significant adverse reactions are described in more detail in other sections of the prescribing information.

- Myelosuppression [see Warnings and Precautions (5.1)]
- Infections [see Warnings and Precautions (5.2)]
- Electrocardiographic Changes [see Warnings and Precautions (5.3)]
- Tumor Lysis Syndrome [see Warnings and Precautions (5.4)]

Hyperglycemia	2 (2)	2 (2)	42 (51)	1 (1)
Hyponatremia	1 (<1)	1 (<1)	17 (20)	2 (2)
Hypermagnesemia	0	0	22 (27)	7 (8)
Hypophosphatemia	0	0	22 (27)	8 (10)
Hyperuricemia	0	0	27 (33)	7 (8)

## 6.1 Clinical Trials Experience

Because clinical trials are conducted under widely varying conditions, adverse reaction rates observed in the clinical trials of a drug cannot be directly compared to rates in the clinical trials of another drug and may not reflect the rates observed in practice.

The data in the WARNINGS AND PRECAUTIONS reflect exposure to romidepsin in four clinical trials involving 363 patients with T-cell lymphoma, including 185 patients with CTCL. Romidepsin was administered as a single agent at a dosage of 14 mg/m<sup>2</sup> on days 1, 8, and 15 of a 28-day cycle. Among 363 patients who received romidepsin, 21% were exposed for 6 months or longer and 13% were exposed for greater than one year.

### Cutaneous T-Cell Lymphoma

The safety of romidepsin was evaluated in 185 patients with CTCL in 2 single arm clinical studies in which patients received a dosage of 14 mg/m<sup>2</sup> on days 1, 8, and 15 of a 28-day cycle. Treatment continued as long as the patient benefitted from and tolerated the drug. The mean duration of treatment in these studies was 5.6 months (range: < 1 month to 83.4 months).

### Common Adverse Reactions

Table 2 summarizes the most frequent adverse reactions (> 20%) regardless of causality using the National Cancer Institute-Common Terminology Criteria for Adverse Events (NCI-CTCAE, Version 3.0). Due to methodological differences between the studies, the AE data are presented separately for Study 1 and Study 2. Adverse reactions are ranked by their incidence in Study 1. Laboratory abnormalities commonly reported (> 20%) as adverse reactions are included in Table 2.

**Table 2: Adverse Reactions Occurring in > 20% of Patients in Either CTCL Study (N=185)**

Adverse Reactions n (%)	Study 1 (n = 102)		Study 2 (n = 83)	
	All grades	Grade 3 or 4	All grades	Grade 3 or 4
Any adverse reactions	99 (97)	36 (35)	83 (100)	68 (82)
Nausea	57 (56)	3 (3)	71 (86)	5 (6)
Asthenia/Fatigue	54 (53)	8 (8)	64 (77)	12 (14)
Infections	47 (46)	11 (11)	45 (54)	27 (33)
Vomiting	35 (34)	1 (<1)	43 (52)	8 (10)
Anorexia	23 (23)	1 (<1)	45 (54)	3 (4)
Hypomagnesemia	22 (22)	1 (<1)	23 (28)	0
Diarrhea	20 (20)	1 (<1)	22 (27)	1 (1)
Pyrexia	20 (20)	4 (4)	19 (23)	1 (1)
Anemia	19 (19)	3 (3)	60 (72)	13 (16)
Thrombocytopenia	17 (17)	0	54 (65)	12 (14)
Dysgeusia	15 (15)	0	33 (40)	0
Constipation	12 (12)	2 (2)	32 (39)	1 (1)
Neutropenia	11 (11)	4 (4)	47 (57)	22 (27)
Hypotension	7 (7)	3 (3)	19 (23)	3 (4)
Pruritus	7 (7)	0	26 (31)	5 (6)
Hypokalemia	6 (6)	0	17 (20)	2 (2)
Dermatitis/Exfoliative dermatitis	4 (4)	1 (<1)	22 (27)	7 (8)
Hypocalcemia	4 (4)	0	43 (52)	5 (6)
Leukopenia	4 (4)	0	38 (46)	18 (22)
Lymphopenia	4 (4)	0	47 (57)	31 (37)
Alanine aminotransferase increased	3 (3)	0	18 (22)	2 (2)
Aspartate aminotransferase increased	3 (3)	0	23 (28)	3 (4)
Hypoalbuminemia	3 (3)	1 (<1)	40 (48)	3 (4)
Electrocardiogram ST-T wave changes	2 (2)	0	52 (63)	0

### Serious Adverse Reactions

Infections were the most common type of SAE reported in both studies with 8 patients (8%) in Study 1 and 26 patients (31%) in Study 2 experiencing a serious infection. Serious adverse reactions reported in > 2% of patients in Study 1 were sepsis and pyrexia (3%). In Study 2, serious adverse reactions in > 2% of patients were fatigue (7%), supraventricular arrhythmia, central line infection, neutropenia (6%), hypotension, hyperuricemia, edema (5%), ventricular arrhythmia, thrombocytopenia, nausea, leukopenia, dehydration, pyrexia, aspartate aminotransferase increased, sepsis, catheter related infection, hypophosphatemia and dyspnea (4%).

There were eight deaths not due to disease progression. In Study 1, there were two deaths: one due to cardiopulmonary failure and one due to acute renal failure. There were six deaths in Study 2: four due to infection and one each due to myocardial ischemia and acute respiratory distress syndrome.

### Discontinuations

Discontinuation due to an adverse event occurred in 21% of patients in Study 1 and 11% in Study 2. Discontinuations occurring in at least 2% of patients in either study included infection, fatigue, dyspnea, QT prolongation, and hypomagnesemia.

### Other Clinical Trials Experience

The following common adverse reactions have been reported following administration of romidepsin as a single agent in 178 patients with peripheral T-cell lymphoma, for which romidepsin is not indicated or recommended. The most common adverse reactions (≥ 30%) included nausea (63%), fatigue (61%), thrombocytopenia (49%), vomiting (39%), neutropenia (39%), pyrexia (38%), diarrhea (36%) and anemia (35%). Other common (≥ 10%) clinically significant adverse reactions included dysgeusia (22%), headache (20%), cough (19%), dyspnea (15%), abdominal pain (13%) and stomatitis (10%). Grade 3 and higher adverse reactions in ≥ 10% were hematologic toxicities (including thrombocytopenia, neutropenia, leukopenia and anemia) and fatigue.

## 7 DRUG INTERACTIONS

### 7.1 Warfarin or Coumarin Derivatives

Prolongation of PT and elevation of INR were observed in a patient receiving romidepsin concomitantly with warfarin. Monitor PT and INR more frequently in patients concurrently receiving romidepsin injection and warfarin [see Clinical Pharmacology (12.3)].

### 7.2 Drugs That Inhibit CYP3A4 Enzymes

Strong CYP3A4 inhibitors increase concentrations of romidepsin [see Clinical Pharmacology (12.3)]. Monitor for toxicity related to increased romidepsin exposure and follow the dose modifications for toxicity [see Dosage and Administration (2.2)] when romidepsin injection is initially co-administered with strong CYP3A4 inhibitors.

### 7.3 Drugs That Induce CYP3A4 Enzymes

Rifampin (a potent CYP3A4 inducer) increased the concentrations of romidepsin [see Clinical Pharmacology (12.3)]. Avoid co-administration of romidepsin injection with rifampin. The use of other potent CYP3A4 inducers should be avoided when possible.

## 8 USE IN SPECIFIC POPULATIONS

### 8.1 Pregnancy

#### Risk Summary

Based on its mechanism of action and findings from animal studies, romidepsin injection can cause embryo-fetal harm when administered to a pregnant woman [see Clinical Pharmacology (12.1)]. There are no available data on romidepsin use in pregnant women to inform a drug associated risk of major birth defects and miscarriage. In an animal reproductive study, romidepsin was embryocidal and caused adverse developmental outcomes including embryo-fetal toxicity

and malformations at exposures below those in patients at the recommended dose (*see Data*). Advise pregnant women of the potential risk to a fetus and to avoid becoming pregnant while receiving romidepsin and for at least 1 month after the last dose.

The background risk of major birth defects and miscarriage for the indicated population is unknown. All pregnancies have a background risk of birth defect, loss, or other adverse outcomes. In the U.S. general population, the estimated background risk of major birth defects and miscarriage in clinically recognized pregnancies is 2% to 4% and 15% to 20%, respectively.

#### Data

##### *Animal Data*

Romidepsin was administered intravenously to pregnant rats during the period of organogenesis at doses of 0.1, 0.2, or 0.5 mg/kg/day. Substantial resorption or postimplantation loss was observed at the high dose of 0.5 mg/kg/day, a maternally toxic dose. Adverse embryo-fetal effects were noted at romidepsin doses of  $\geq 0.1$  mg/kg/day, with systemic exposures (AUC)  $\geq 0.2\%$  of the human exposure at the recommended dose of 14 mg/m<sup>2</sup>/week. Drug-related fetal effects consisted of reduced fetal body weights, folded retina, rotated limbs, and incomplete sternal ossification.

## 8.2 Lactation

#### Risk Summary

There are no data on the presence of romidepsin or its metabolites in human milk, the effects on the breastfed child, or the effects on milk production. Because many drugs are excreted in human milk and because of the potential for serious adverse reactions in the breastfed child, advise lactating women not to breastfeed during treatment with romidepsin injection and for 1 week after the last dose.

## 8.3 Females and Males of Reproductive Potential

Romidepsin injection can cause fetal harm when administered to a pregnant woman [*see Use in Specific Populations (8.1)*].

#### Pregnancy Testing

Perform pregnancy testing in females of reproductive potential within 7 days prior to initiating therapy with romidepsin injection.

#### Contraception

##### *Females*

Advise females of reproductive potential to use effective contraception during treatment with romidepsin injection and for 1 month after the last dose. Romidepsin may reduce the effectiveness of estrogen-containing contraceptives. Therefore, alternative methods of non-estrogen containing contraception (e.g., condoms, intrauterine devices) should be used in patients receiving romidepsin injection.

##### *Males*

Advise males with female partners of reproductive potential to use effective contraception during treatment with romidepsin injection and for 1 month after the last dose.

#### Infertility

Based on findings in animals, romidepsin has the potential to affect male and female fertility [*see Nonclinical Toxicology (13.1)*].

## 8.4 Pediatric Use

The safety and effectiveness of romidepsin injection in pediatric patients have not been established.

## 8.5 Geriatric Use

Of the 186 patients with CTCL who received romidepsin in clinical studies, 51 (28%) were 65 years of age and older, while 16 (9%) were 75 years of age. No overall differences in safety or effectiveness were observed between patients 65 years of age and over and younger patients; however, greater sensitivity of some older individuals cannot be ruled out.

## 8.6 Hepatic Impairment

In a hepatic impairment study, romidepsin was evaluated in 19 patients with advanced cancer and mild (8), moderate (5), or severe (6) hepatic impairment. There were 4 deaths during the first cycle of treatment: 1 patient with mild hepatic impairment, 1 patient with moderate hepatic impairment, and 2 patients with severe hepatic impairment. No dose adjustments are recommended for patients with mild hepatic impairment. Reduce the romidepsin injection starting dose for patients with moderate and severe hepatic impairment [*see Dosage and Administration (2.3)* and *Clinical Pharmacology (12.3)*]. Monitor patients with hepatic impairment more frequently for toxicity, especially during the first cycle of therapy.

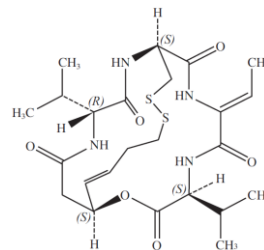
## 10 OVERDOSAGE

No specific information is available on the treatment of overdosage of romidepsin. Toxicities in a single-dose study in rats or dogs, at intravenous romidepsin doses up to 2.2-fold the recommended human dose based on the body surface area, included irregular respiration, irregular heartbeat, staggering gait, tremor, and tonic convulsions. In the event of an overdose, it is reasonable to employ the usual supportive measures, e.g., clinical monitoring and supportive therapy, if required. There is no known antidote for romidepsin and it is not known if romidepsin is dialyzable.

## 11 DESCRIPTION

Romidepsin, a histone deacetylase (HDAC) inhibitor, is a bicyclic depsipeptide. At room temperature, romidepsin is a white to off-white crystalline powder and is described chemically as (1S,4S,7Z,10S,16E,21R)-7-ethylidene-4,21-bis(1-methylethyl)-2-oxa-12,13-dithia-5,8,20,23-tetraazabicyclo[8.7.6]tricos-16-ene-3,6,9,19,22-pentone. The molecular formula is C<sub>24</sub>H<sub>36</sub>N<sub>4</sub>O<sub>6</sub>S<sub>2</sub>.

The molecular weight is 540.7 g/mol and the structural formula is:



Romidepsin injection is intended for intravenous infusion only after dilution with 0.9% Sodium Chloride, USP.

Romidepsin injection is a sterile, clear, colorless to pale yellow solution and is supplied in single-dose vial.

Each mL contains romidepsin, 5 mg; povidone, 10 mg; DL-alpha-tocopherol, 0.05 mg; dehydrated alcohol, 157.8 mg (20% v/v) and propylene glycol, 828.8 mg.

## 12 CLINICAL PHARMACOLOGY

### 12.1 Mechanism of Action

Romidepsin is a histone deacetylase (HDAC) inhibitor. HDACs catalyze the removal of acetyl groups from acetylated lysine residues in histones, resulting in the modulation of gene expression. HDACs also deacetylate non-histone proteins, such as transcription factors. *In vitro*, romidepsin causes the accumulation of acetylated histones, and induces cell cycle arrest and apoptosis of some cancer cell lines with IC<sub>50</sub> values in the nanomolar range. The mechanism of the antineoplastic effect of romidepsin observed in nonclinical and clinical studies has not been fully characterized.

### 12.2 Pharmacodynamics

#### Cardiac Electrophysiology

At doses of 14 mg/m<sup>2</sup> as a 4-hour intravenous infusion and at doses of 8 (0.57 times the recommended dose), 10 (0.71 times the recommended dose) or 12 (0.86 times the recommended dose) mg/m<sup>2</sup> as a 1-hour infusion, no large changes in the mean QTc interval (> 20 milliseconds) from baseline based on Fridericia correction method were detected. Small increase in mean QT interval (< 10 milliseconds) and mean QT interval increase between 10 to 20 milliseconds cannot be excluded.

Romidepsin was associated with a delayed concentration-dependent increase in heart rate in patients with advanced cancer with a maximum mean increase in heart rate of 20 beats per minute occurring at the 6-hour time point after start of romidepsin infusion for patients receiving 14 mg/m<sup>2</sup> as a 4-hour infusion.

### 12.3 Pharmacokinetics

In patients with T-cell lymphomas who received 14 mg/m<sup>2</sup> of romidepsin intravenously over a 4-hour period on days 1, 8, and 15 of a 28-day cycle, geometric mean values of the maximum plasma concentration (C<sub>max</sub>) and the area under the plasma concentration versus time curve (AUC<sub>0-∞</sub>) were 377 ng/mL and 1,549 ng<sup>1</sup>hr/mL, respectively. Romidepsin exhibited linear pharmacokinetics across doses ranging from 1.0 (0.07 times the recommended dose) to 24.9 (1.76 times the recommended dose) mg/m<sup>2</sup> when administered intravenously over 4 hours in patients with advanced cancers.

#### Distribution

Romidepsin is highly protein bound in plasma (92% to 94%) over the concentration range of 50 ng/mL to 1,000 ng/mL with α<sub>1</sub>-acid-glycoprotein (AAG) being the principal binding protein. Romidepsin is a substrate of the efflux transporter P-glycoprotein (P-gp, ABCB1).

*In vitro*, romidepsin accumulates into human hepatocytes via an unknown active uptake process. Romidepsin is not a substrate of the following uptake transporters: BCRP, BSEP, MRP2, OAT1, OAT3, OATP1B1, OATP1B3, or OCT2. In addition, romidepsin is not an inhibitor of BCRP, MRP2, MDR1 or OAT3. Although romidepsin did not inhibit OAT1, OCT2, and OATP1B3 at concentrations seen clinically (1 μmol/L), modest inhibition was observed at 10 μmol/L. Romidepsin was found to be an inhibitor of BSEP and OATP1B1.

#### Metabolism

Romidepsin undergoes extensive metabolism *in vitro* primarily by CYP3A4 with minor contribution from CYP3A5, CYP1A1, CYP2B6, and CYP2C19. At therapeutic concentrations, romidepsin did not competitively inhibit CYP1A2, CYP2C9, CYP2C19, CYP2D6, CYP2E1, or CYP3A4 *in vitro*.

At therapeutic concentrations, romidepsin did not cause notable induction of CYP1A2, CYP2B6 and CYP3A4 *in vitro*. Therefore, pharmacokinetic drug-drug interactions are unlikely to occur due to CYP450 induction or inhibition by romidepsin when co-administered with CYP450 substrates.

#### Excretion

Following 4-hour intravenous administration of romidepsin at 14 mg/m<sup>2</sup> on days 1, 8, and 15 of a 28-day cycle in patients with T-cell lymphomas, the terminal half-life (t<sub>1/2</sub>) was approximately 3 hours. No accumulation of plasma concentration of romidepsin was observed after repeated dosing.

#### Drug Interactions

##### Ketoconazole

Following co-administration of 8 mg/m<sup>2</sup> romidepsin (4-hour infusion) with ketoconazole, the overall romidepsin exposure was increased by approximately 25% and 10% for AUC<sub>0-∞</sub> and C<sub>max</sub>, respectively, compared to romidepsin alone, and the difference in AUC<sub>0-∞</sub> between the 2 treatments was statistically significant.

##### Rifampin

Following co-administration of 14 mg/m<sup>2</sup> romidepsin (4-hour infusion) with rifampin, the overall romidepsin exposure was increased by approximately 80% and 60% for AUC<sub>0-∞</sub> and C<sub>max</sub>, respectively, compared to romidepsin alone, and the difference between the 2 treatments was statistically significant. Co-administration of rifampin decreased the romidepsin clearance and volume of distribution by 44% and 52%, respectively. The increase in exposure seen after co-administration with rifampin is likely due to rifampin's inhibition of an undetermined hepatic uptake process that is predominant for the disposition of romidepsin.

##### Drugs that inhibit P-glycoprotein

Drugs that inhibit p-glycoprotein may increase the concentration of romidepsin.

#### Specific Populations

##### Effect of Age, Gender, Race or Renal Impairment

The pharmacokinetics of romidepsin was not influenced by age (27 years to 83 years), gender, race (white vs. black) or mild (estimated creatinine clearance 50 mL/min to 80 mL/min), moderate (estimated creatinine clearance 30 mL/min

to 50 mL/min), or severe (estimated creatinine clearance < 30 mL/min) renal impairment. The effect of end-stage renal disease (estimated creatine clearance less than 15 mL/min) on romidepsin pharmacokinetics has not been studied.

#### Hepatic Impairment

Romidepsin clearance decreased with increased severity of hepatic impairment. In patients with cancer, the geometric mean C<sub>max</sub> values after administration of 14, 7, and 5 mg/m<sup>2</sup> romidepsin in patients with mild (B1: bilirubin ≤ ULN and AST > ULN; B2: bilirubin > ULN but ≤ 1.5 × ULN and any AST), moderate (bilirubin > 1.5 × ULN to ≤ 3 × ULN and any AST), and severe (bilirubin > 3 × ULN and any AST) hepatic impairment were approximately 111%, 96%, and 86% of the corresponding value after administration of 14 mg/m<sup>2</sup> romidepsin in patients with normal (bilirubin ≤ upper limit of normal (ULN) and aspartate aminotransferase (AST) ≤ ULN) hepatic function, respectively. The geometric mean AUC<sub>inf</sub> values in patients with mild, moderate, and severe hepatic impairment were approximately 144%, 114%, and 116% of the corresponding value in patients with normal hepatic function, respectively. Among these 4 cohorts, moderate interpatient variability was noted for the exposure parameters C<sub>max</sub> and AUC<sub>inf</sub>, as the coefficient of variation (CV) ranged from 30% to 54%.

### 13 NONCLINICAL TOXICOLOGY

#### 13.1 Carcinogenesis, Mutagenesis, Impairment of Fertility

Carcinogenicity studies have not been performed with romidepsin. Romidepsin was not mutagenic *in vitro* in the bacterial reverse mutation assay (Ames test) or the mouse lymphoma assay. Romidepsin was not clastogenic in an *in vivo* rat bone marrow micronucleus assay when tested to the maximum tolerated dose (MTD) of 1 mg/kg in males and 3 mg/kg in females (6 and 18 mg/m<sup>2</sup> in males and females, respectively). These doses were up to 1.3-fold the recommended human dose, based on body surface area.

Based on nonclinical findings, male and female fertility may be compromised by treatment with romidepsin. In a 26-week toxicology study, romidepsin administration resulted in testicular degeneration in rats at 0.33 mg/kg/dose (2 mg/m<sup>2</sup>/dose) following the clinical dosing schedule. This dose resulted in AUC<sub>0-∞</sub> values that were approximately 2% the exposure level in patients receiving the recommended dose of 14 mg/m<sup>2</sup>/dose. A similar effect was seen in mice after 4 weeks of drug administration at higher doses. Seminal vesicle and prostate organ weights were decreased in a separate study in rats after 4 weeks of daily drug administration at 0.1 mg/kg/day (0.6 mg/m<sup>2</sup>/day), approximately 30% the estimated human daily dose based on body surface area. Romidepsin showed high affinity for binding to estrogen receptors in pharmacology studies. In a 26-week toxicology study in rats, atrophy was seen in the ovary, uterus, vagina and mammary gland of females administered doses as low as 0.1 mg/kg/dose (0.6 mg/m<sup>2</sup>/dose) following the clinical dosing schedule. This dose resulted in AUC<sub>0-∞</sub> values that were 0.3% of those in patients receiving the recommended dose of 14 mg/m<sup>2</sup>/dose. Maturation arrest of ovarian follicles and decreased weight of ovaries were observed in a separate study in rats after 4 weeks of daily drug administration at 0.1 mg/kg/day (0.6 mg/m<sup>2</sup>/day). This dose is approximately 30% the estimated human daily dose based on body surface area.

### 14 CLINICAL STUDIES

Romidepsin was evaluated in 2 multicenter, single-arm clinical studies in patients with CTCL (Study 1 [NCT00106431] and Study 2 [NCT00007345]). Overall, 167 patients with CTCL were treated in the US, Europe, and Australia. Study 1 included 96 patients with confirmed CTCL after failure of at least 1 prior systemic therapy. Study 2 included 71 patients with a primary diagnosis of CTCL who received at least 2 prior skin directed therapies or one or more systemic therapies. Patients were treated with romidepsin at a starting dose of 14 mg/m<sup>2</sup> infused over 4 hours on days 1, 8, and 15 every 28 days.

In both studies, patients could be treated until disease progression at the discretion of the investigator and local regulators. Objective disease response was evaluated according to a composite endpoint that included assessments of skin involvement, lymph node and visceral involvement, and abnormal circulating T-cells ("Sézary cells").

The primary efficacy endpoint for both studies was overall objective disease response rate (ORR) based on the investigator assessments, and was defined as the proportion of patients with confirmed complete response (CR) or partial response (PR). CR was defined as no evidence of disease and PR as ≥ 50% improvement in disease. Secondary endpoints in both studies included duration of response and time to response.

#### Baseline Patient Characteristics

Demographic and disease characteristics of the patients in Study 1 and Study 2 are provided in Table 3.

**Table 3: Baseline Patient Characteristics (CTCL Population)**

Characteristic	Study 1 (N = 96)	Study 2 (N = 71)
<b>Age</b>		
N	96	71
Mean (SD)	57 (12)	56 (13)
Median (Range)	57 (21, 89)	57 (28, 84)
<b>Sex, n (%)</b>		
Men	59 (61)	48 (68)
Women	37 (39)	23 (32)
<b>Race, n (%)</b>		
White	90 (94)	55 (77)
Black	5 (5)	15 (21)
Other/Not Reported	1 (1)	1 (1)
<b>Stage of Disease at Study Entry, n (%)</b>		
IA	0 (0)	1 (1)
IB	15 (16)	6 (9)
IIA	13 (14)	2 (3)
IIB	21 (22)	14 (20)
III	23 (24)	9 (13)
IVA	24 (25)	27 (38)
IVB	0 (0)	12 (17)
<b>Number of Prior Skin-Directed Therapies</b>		
Median (Range)	2 (0, 6)	1 (0, 3)
<b>Number of Prior Systemic Therapies</b>		
Median (Range)	2 (1, 8)	2 (0, 7)

#### Clinical Results

Efficacy outcomes for CTCL patients are provided in Table 4. Median time to first response was 2 months (range 1 to 6) in both studies. Median time to CR was 4 months in Study 1 and 6 months in Study 2 (range 2 to 9).

**Table 4: Clinical Results for CTCL Patients**

Response Rate	Study 1 (N = 96)	Study 2 (N = 71)
<b>ORR (CR + PR), n (%)</b> [95% Confidence Interval]	33 (34) [25, 45]	25 (35) [25, 49]
CR, n (%) [95% Confidence Interval]	6 (6) [2, 13]	4 (6) [2, 14]
PR, n (%) [95% Confidence Interval]	27 (28) [19, 38]	21 (30) [20, 43]
<b>Duration of Response (months)</b>		
N	33	25
Median (range)	15 (1, 20*)	11 (1, 66*)

\*Denotes censored value.

#### 15 REFERENCES

1. OSHA Hazardous Drugs. *OSHA*.  
<http://www.osha.gov/SLTC/hazardousdrugs/index.html>

#### 16 HOW SUPPLIED/STORAGE AND HANDLING

##### How Supplied

Romidepsin Injection is supplied as a sterile, clear, colorless to pale yellow solution available in single-dose vial in the following carton packaged strength.

27.5 mg/5.5 mL (5 mg/mL)

1 Single-Dose Vial in 1 Carton: NDC 70121-2250-1

##### Storage and Handling

Store at 20° to 25°C (68° to 77°F); excursions permitted between 15° to 30°C (59° to 86°F) in the carton [see USP Controlled Room Temperature]. Protect from light.

Romidepsin injection is a hazardous drug. Follow applicable special handling and disposal procedures.<sup>1</sup>

#### 17 PATIENT COUNSELING INFORMATION

Advise the patient to read the FDA-approved patient labeling (Patient Information).

##### Low Blood Counts

Advise patients that treatment with romidepsin injection can cause low blood counts and that frequent monitoring of hematologic parameters is required. Patients should be instructed to report fever or other signs of infection, significant fatigue, shortness of breath, or bleeding [see *Warnings and Precautions (5.1)*].

##### Infections

Advise patients that infections may occur during treatment with romidepsin injection. Advise patients to report fever, cough, shortness of breath with or without chest pain, burning on urination, flu-like symptoms, muscle aches, or worsening skin problems. Advise patients to report any previous history of hepatitis B before starting romidepsin injection [see *Warnings and Precautions (5.2)*].

##### Tumor Lysis Syndrome

Advise patients of the risk of tumor lysis syndrome (especially those with advanced stage disease and/or high tumor burden) to maintain high fluid intake for at least 72 hours after each dose [see *Warnings and Precautions (5.4)*].

##### Nausea and Vomiting

Advise patients that nausea and vomiting are common following treatment with romidepsin injection. Prophylactic antiemetics are recommended for all patients. Advise patients to report these symptoms so that appropriate treatment can be instituted [see *Adverse Reactions (6.1)*].

##### Embryo-Fetal Toxicity

Advise patients that romidepsin injection can cause fetal harm when administered during pregnancy [see *Warnings and Precautions (5.5)* and *Use in Specific Populations (8.1)*].

##### Contraception

Advise females of reproductive potential to use effective contraception during treatment with romidepsin injection and for 1 month after the last dose. Advise males with female partners of reproductive potential to use effective contraception during treatment with romidepsin injection and for 1 month after the last dose [see *Use in Specific Populations (8.3)*].

##### Lactation

Advise lactating women not to breastfeed during treatment with romidepsin injection and for 1 week after the last dose [see *Use in Specific Populations (8.2)*].

##### Infertility

Advise females and males of reproductive potential that romidepsin injection may cause infertility [see *Nonclinical Toxicology (13.1)*].

Manufactured by:  
**Amneal Oncology Pvt. Ltd.**  
Telangana 509301, INDIA

Distributed by:  
**Amneal Pharmaceuticals LLC**  
Bridgewater, NJ 08807

Rev. 09-2025-00